

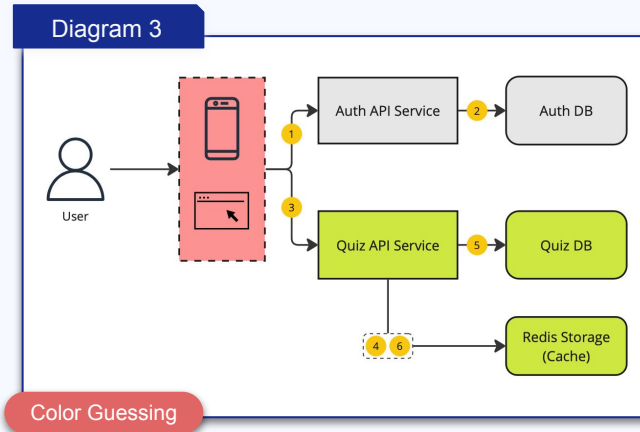
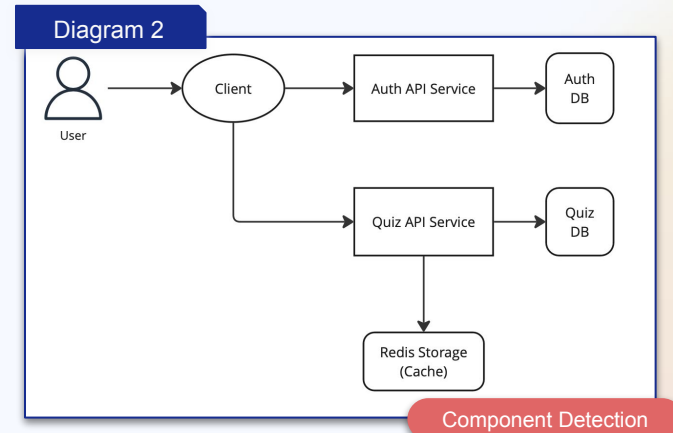
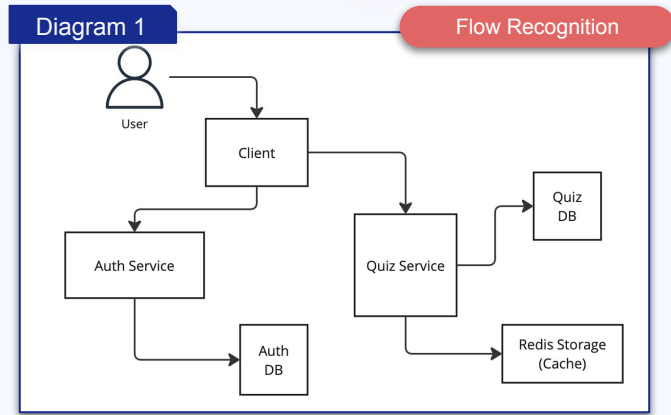


3 Tips For Creating A Better Diagram

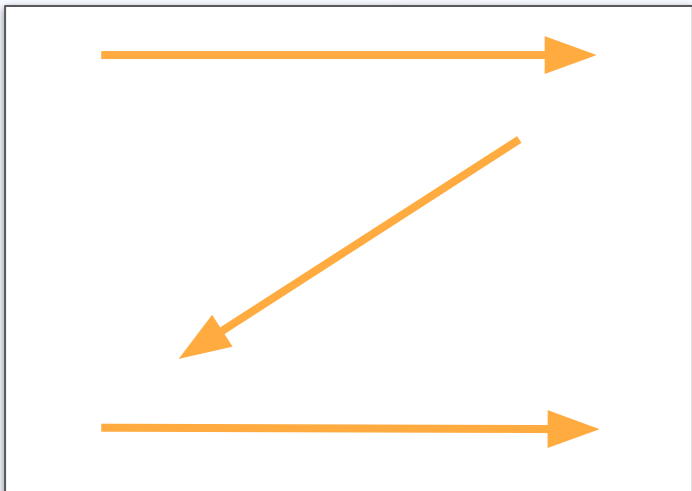
Tien Nguyen



What is the **main problem** of these diagrams?

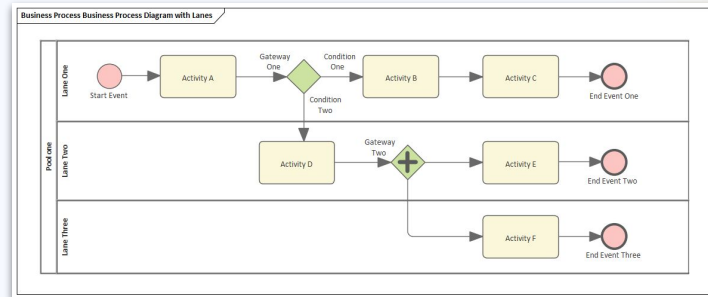


Tip #1: Leverage the Z-Pattern

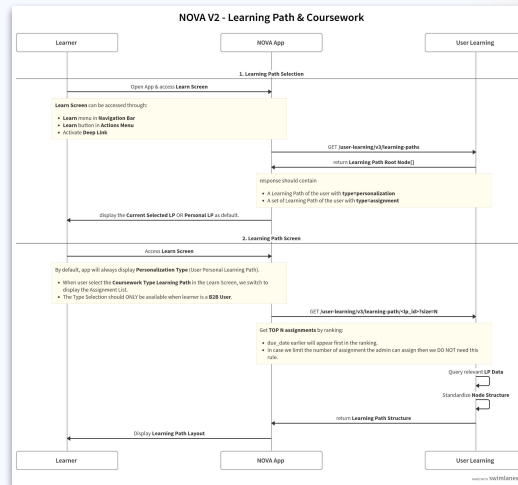


For Your Diagram:

- **Start** the diagram from **top-left**.
- **End** the flow at the **bottom-right**.
- Add **step indicator** (number) to arrows.

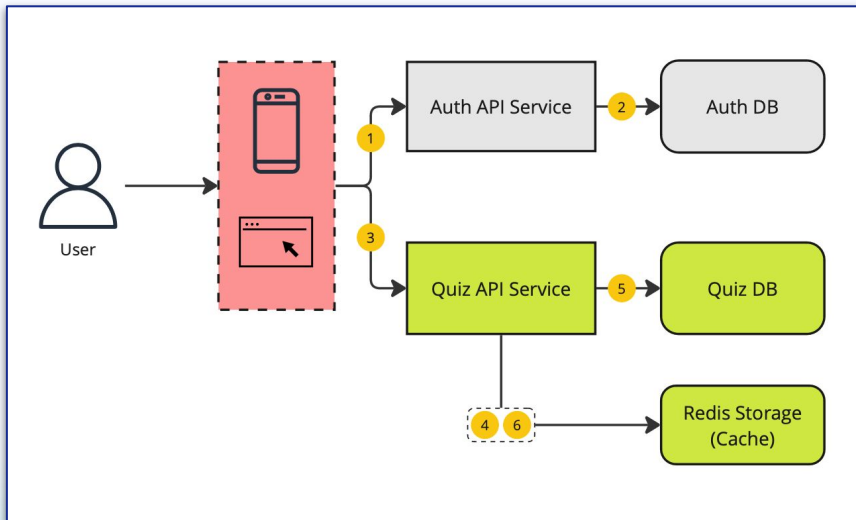


source: sparxsystems.com



source: ELSA Confluence

Tip #2: Using Colors With Purposes

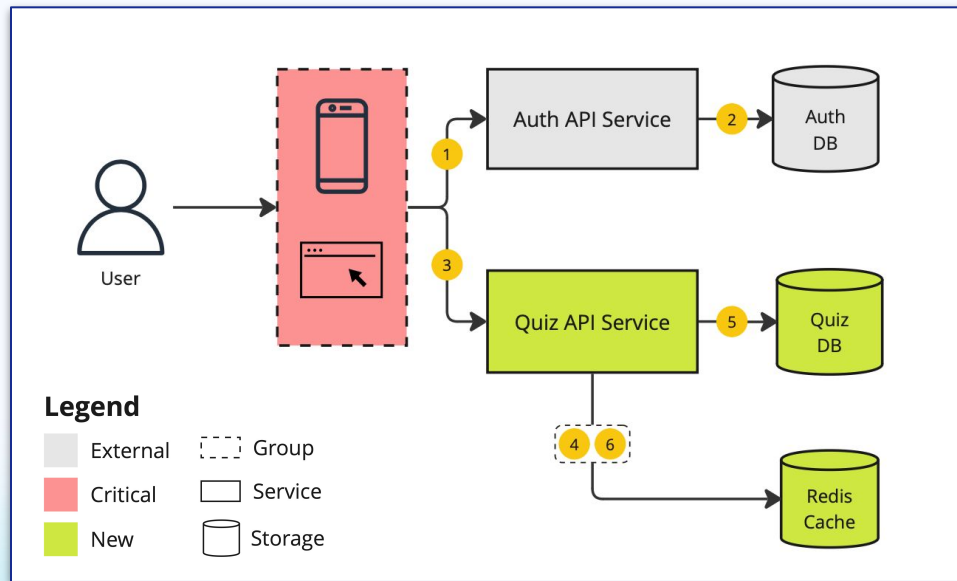


Use colors strategically to represent key aspects:

- **Red:** Indicates critical, high-secured items/components.
- **Green:** Represents new items, improvements, successful outcomes, and optimized performance.
- **Blue:** Highlights trust, stability (e.g., databases, devices).
- **Orange:** Signals areas of attention or transformation.
- **Grey:** represent the old/excluded items, or out of scope.

Use contrasting colors for maintaining readability

Tip #3: Categorize your Legend



- Use **different shapes** in the legend to **distinguish components**.
- Use **shape border differentiation** to enrich the component type (if needed).
- Combine **shape** and **color**.
- Place the **legend** on the side or bottom for a clean layout.



3 Tips For A Better Diagram

Z Pattern

Color with Purpose

The Legend

THANK YOU!

